

**GISBERT PÖPPLER**  
ARCHITEKTUR • INTERIEUR

SELECTED  
WORKS

GISBERT PÖPPLER  
ARCHITEKTUR • INTERIEUR

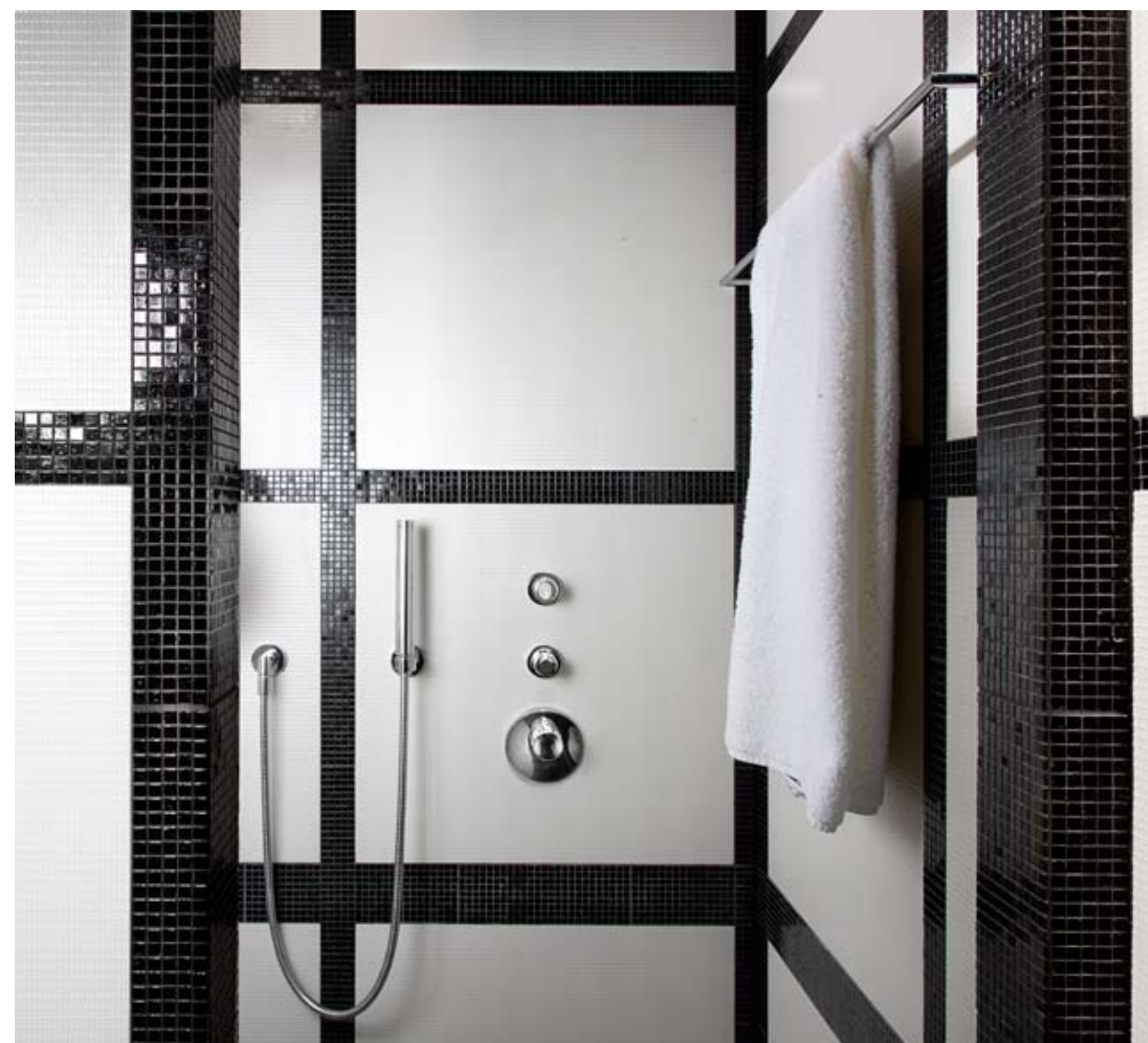
**STUDIO- APARTMENT** Three dimensional cross-cut surfaces accentuate the stunning results of strict discipline, creating a spatial plaid that runs through this masculine apartment.







The interior design called for a courageous client, trusting that Pöpler's counter intuitive proposal of injecting darkness to bring in light. Reveling in the minute details, glossy black ceilings and custom built in furniture accentuate the complex lines of the five level residence. The angular shapes and clear lines of the space are enhanced by careful attention to details; from the precisely joined natural grained wood veneers to a complexly tiled black and white bathroom.





**CLEAN CAR**

*Exterior-* Pöpler makes simple structures sleek and aerodynamic, wrapping the Clean Car exteriors with a horizontally rippled silver skin and Ferrari red accents that accentuate distance - elevating mundane functionality to art object. The effect achieved is that of a glorified highway service station, furthering the 1950's drive-in diner theme alluded to with the interiors.







*Interior - Evoking the golden age of the automobile, Pöpler has transformed a chain of car wash waiting rooms with glossy cobalt blue glass and tiled walls paired with asphalt colored flooring that hint at the open road. Furnishings add to the vintage effect with brushed aluminum "US Navy" chairs and chrome pendant lights, while a curved neon ceiling light enhances the aerodynamic feel reminiscent of a 1950's American drive-in diner.*



**FINE GRAINED** Transparency and light  
replace solid walls -  
transforming the structure and purpose of this  
former grain silo; while fields of wheat carpet the  
floors, offsetting an expanse of clear blue skies on  
the walls above.







With extensive structural work Pöppler inserted windows in order to bisect the U-shaped brick building, creating a new sense of openness with clear views of the river in this upscale office space set on the banks of the Spree river in Berlin.

An elaborate custom light installation welcome guests to the vibrant lobby. Going deeper into the offices, black trimming provides a strong base to smooth heavenly blue walls, while golden toned carpet gives a respectful nod to the long history of the business. Dark, ruby toned, built-in cabinets punctuate the spaces - adding a sense of scale depth and proportion.





**MODERN LIVING** With a bold use of color and the willingness to re-interpret the bones of an historical building, Pöppler has injected new found energy and innovation into a fading model of ideal living.

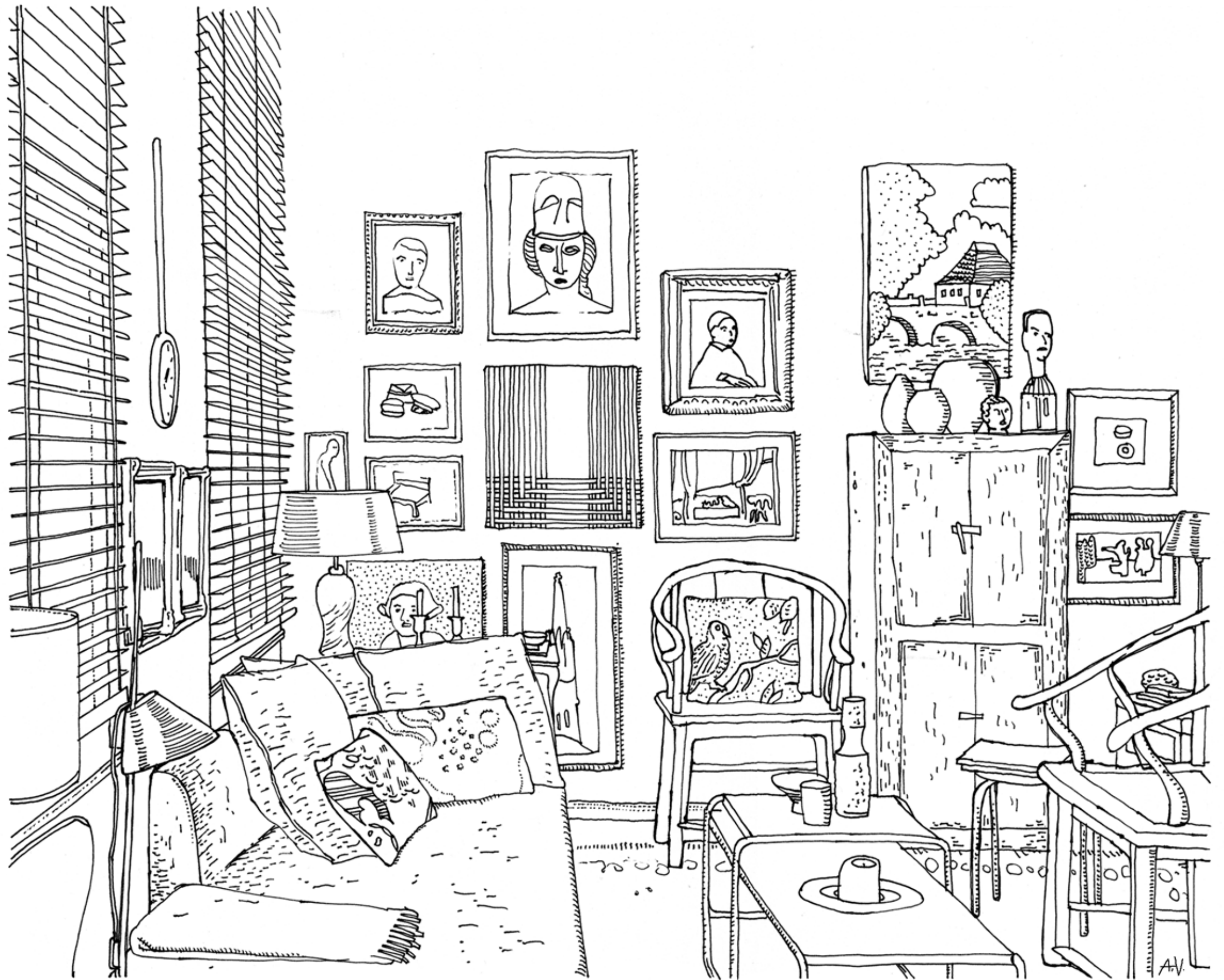




Taking a single swing, Pöpler unified the main rooms of this 90qm apartment originally designed by Walter Gropius. By ripping out the walls along a sunny bank of existing windows he created an expansive pass-through corridor and colorful journey from the tart lemon living-room to the Chinese red kitchen and into the emerald green office. Combining an eclectic collection of high and low-cost interior features, the kitchen fixtures, sourced from Ikea have been covered in exquisite Dedar textiles and brass hardware.









**SHOWCASE RETREAT** Collaborating with his client, a furniture dealer with a deep knowledge of design, Pöppler deftly made strategic structural changes that transformed this tiny pied-à-terre into a showcase for the client's ever-growing cabinet of curiosities.







A kitchen wall was removed to increase light and flow. Sumptuous earthy Farrow & Ball wall emulsions were applied in hand-brushed matte and smooth high gloss, both defining and unifying the different spaces. The color scheme followed into bathroom which was expertly fitted with Travertine marble and handsome cocoa details. To further refine the space, Pöpler added custom decorative details including a new molding on the ceiling and antique hardware elements for the doors, windows and cabinets.



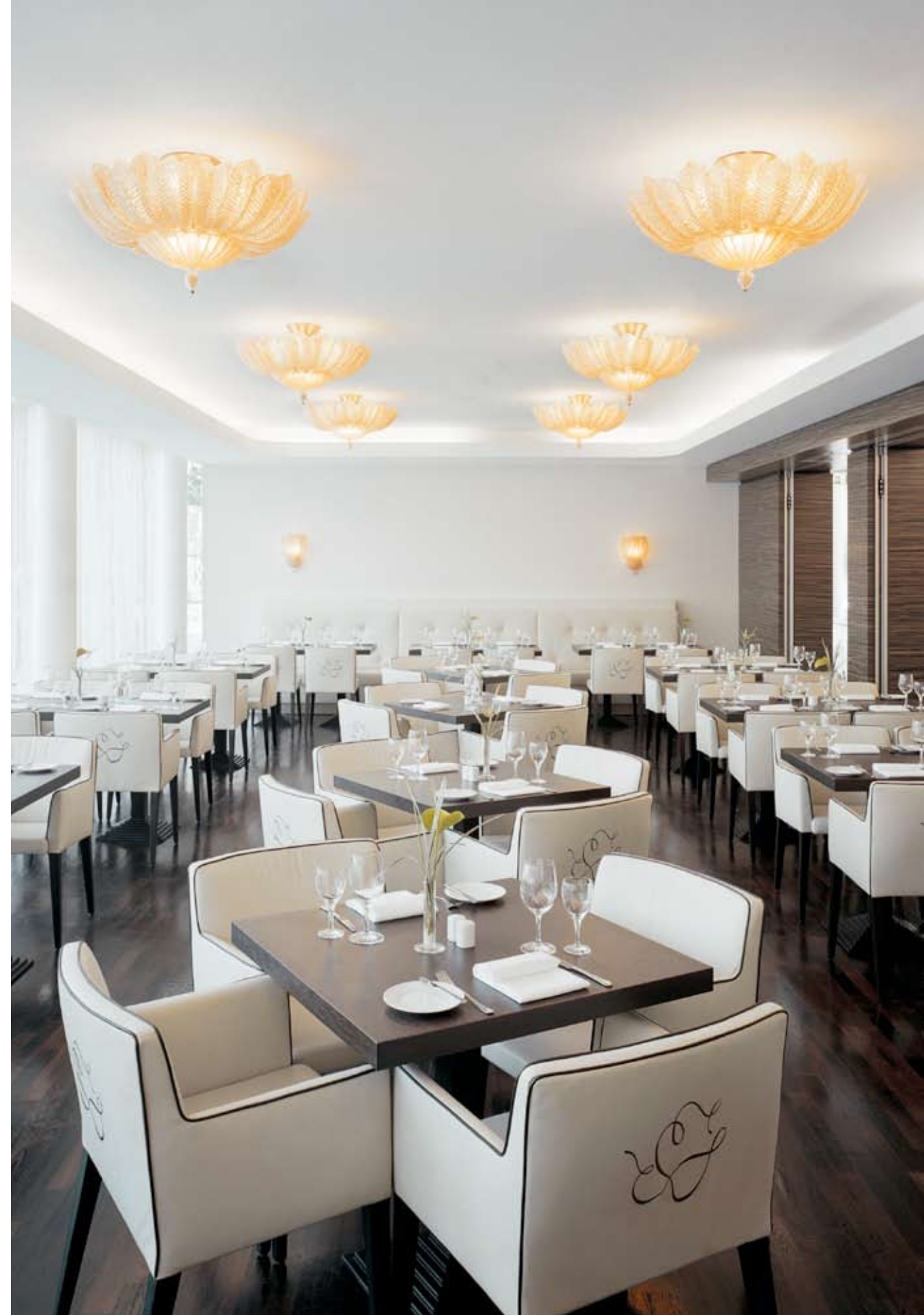


**GARAMONT RESTAURANT** Tucked into a corner of the Adrema Hotel, occupying the building where the original barcode machines were produced, this restaurant offers a feast of straight and curvy lines, hinting at the building's unique history.



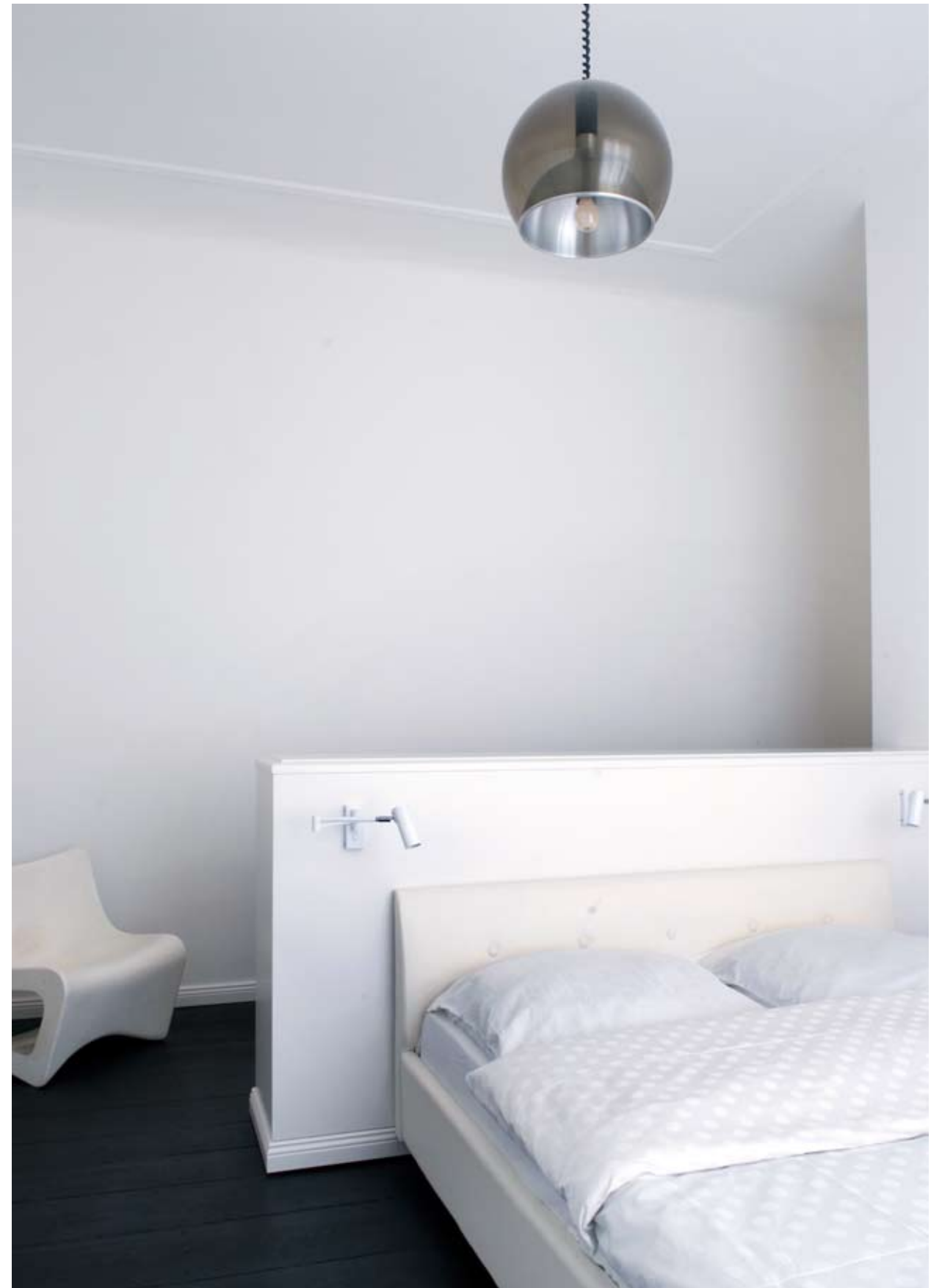


Vertical stripes of gold tone brushed aluminum are laid against a silk backing in pool blue, while rich wood veneer wall paneling further enhances the linear theme. Meanwhile, a reoccurring calligraphic detail appears throughout the restaurant, tying the various spaces together. The sinuous line in the central light element of the buffet console and the squiggled emblem on the back of chairs specifically designed for Garamond, whimsically softens the graphic motif that runs throughout the rooms.



**CALM AND FRESH** Energetic colors in two bathrooms are paired with the crisp, clean calm of an all-white bedroom, reflecting the dynamic, ever-changing vibrancy of this home's multi-cultural inhabitants.

*All White Master Bedroom -* In a sanctuary of clean whites, the master bedroom provides calm breathing space. Pöpler redefined the flow and functionality of the room, constructing a half wall that doubles as hidden storage space and head board boasting surprising custom details including beveled molding and chrome door knockers re-purposed as cabinet pulls.







*Yellow / Mint Master Bathroom*- Pool blue walls and a sunny yellow ceiling reflect the zesty freshness of a Mediterranean beach - complete with splashes of red cabinets, clean white beveled tiles and enameled freestanding tub in stocking feet.

*The Mini-Bath*- Orange and white ceramic tiled walls and a kiss of chocolate Emperado marble accents create a spirited cocktail ambiance in this diminutive second bathroom.



**DESIGNED TO BE SAVORED** A delightful banquet of re-purposed elements blend their distinct flavors, creating surprising harmony in this eclectic kitchen that was designed to be savored.





Pöpler deftly blends unexpected ingredients including Mezzaluna lights from Bruno Gecchelin, an antique farmhouse wardrobe reinvented as china cabinet, custom made brass kitchen fixtures, travertine marble display table and dressing-room doors both sourced from the now defunct German department store Sellbach. Linking all these disparate notes, is a sea-toned color story told in dark emerald marble counter tops, watery blue ceiling and arsenic toned cabinets.



*Studio Profile*

Gisbert Pöppler Architecture and Interior leverages extensive experience with architecture, interior and custom furniture design in a single, multifaceted studio. Here big picture vision and refined, detailed precision are integrated in sumptuous spaces developed for commercial and residential clients.

Bringing together a comprehensive understanding of space, color, light and fittings we orchestrate a full environmental experience – connecting rooms with an overarching concept that links and unifies. With a passion for excellence and the fine art of design, we innovate solutions that balance tradition with modernity. Whether sourcing vintage pieces or calling on local craftsmen to create one-of-a-kind furnishings, our approach is made-to-measure for each of our clients.

Applying the skills and knowledge of our hand picked team our process begins with dialogue and observation, gaining a deep understanding of the client's desires and objectives. By asking the right questions and observing how our clients use their furnishings and environments in their daily lives, our results pair holistically functional solutions with sophisticated artistry.

*Client Categories:*

Residential  
Restaurants & hospitality  
Corporate headquarters  
Retail spaces & showrooms

*Our Disciplines:*

Architecture  
Interior Design  
Custom Furniture and Fittings  
Lighting Design  
Color Concepts

Complimenting this spectrum of spatial design services, we also provide real estate scouting for select clients, pairing unique properties and investors throughout Germany.

C R E D I T S

*Photos*

Wolfgang Stahr  
Stephan Gast  
Hiepler Brunier

*Illustrations*

Andree Volkmann

*Text*

Amy Stafford

*Grafic Design*

Xavier Busch





Gisbert Pöpler  
Architektur · Interieur  
Falckensteinstraße 48  
D - 10997 Berlin

[mail@gisbertpoepler.com](mailto:mail@gisbertpoepler.com)

+49 (0)30.44 04 49 73 **t**  
+49 (0)30.43 73 92 46 **f**

**[www.gisbertpoepler.com](http://www.gisbertpoepler.com)**